

PCB Iterations

V0.1 (Breadboard)

Pre-PCB design that often was multiple parts of the system that would eventually become one.

Pros

- Easy to add/change components for testing

Cons

- Unreliable connections

Components

- [ESP32-WROOM-32U](#)
- [FLIPSKY 75100 VESC](#)
- [Stepper motor driver DM542T](#)
- [SparkFun Logic Level Converter - Bi-Directional](#)

V0.1 (Breadboard)

V1

Version one was created by Brandon Marcellus & Juan Silva early on in the start of the project after we had started some of the basic wiring of control and data collection.

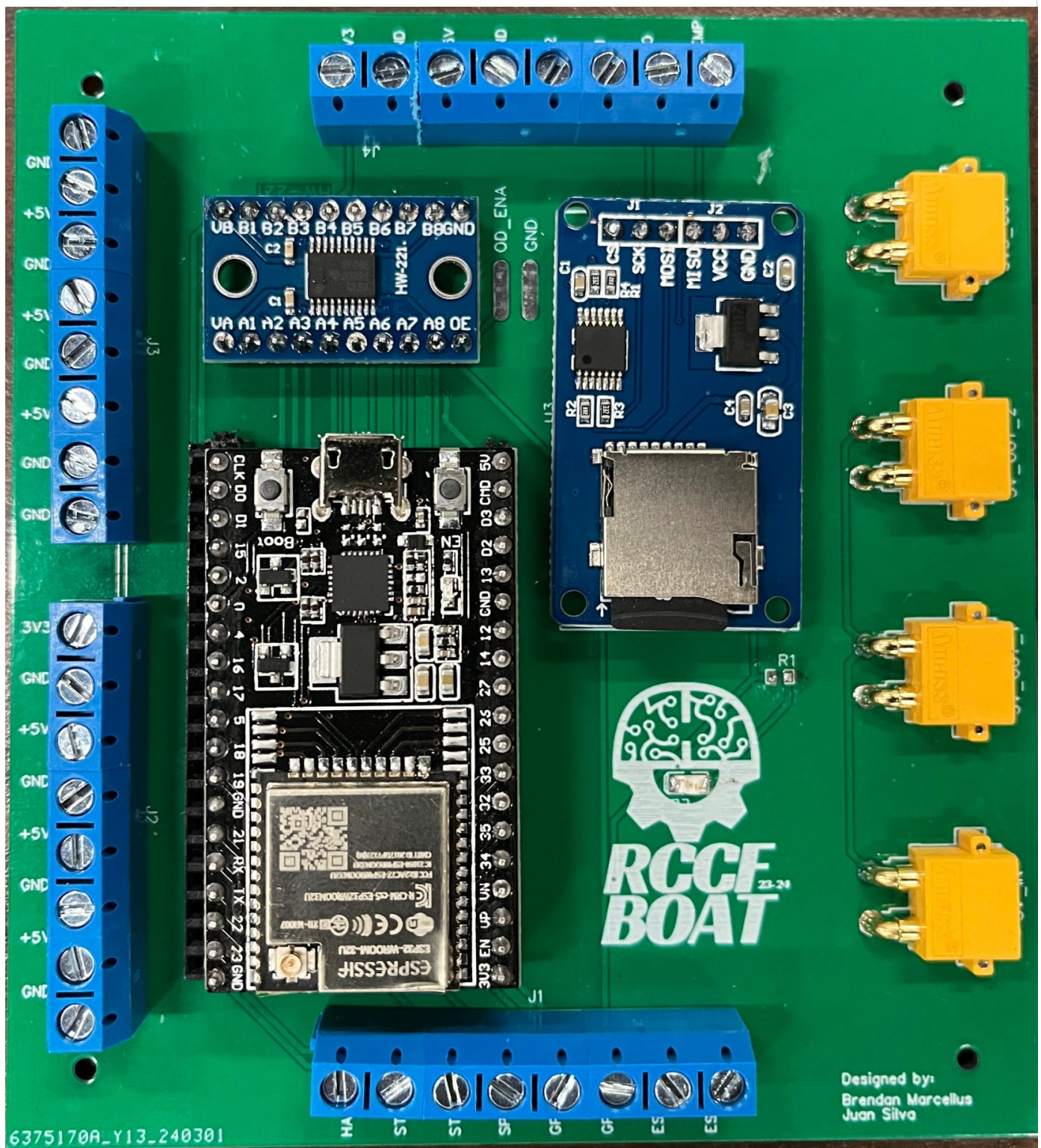
Pros

- Organization greatly improved
- Power distribution
-

Cons

- Logic level shifter was not wired correctly
- Not enough IO ports were available for use
- SD Card module VCC pin was connected to 3.3V instead of 5V

V1



V 1.1 (Breadboard)

V2

Revision #5

Created 19 April 2024 23:30:27 by Dwight Howard, II

Updated 20 April 2024 20:23:55 by Dwight Howard, II